

ECAR

EVERY CAMPUS A REFUGE

2022



ECAR



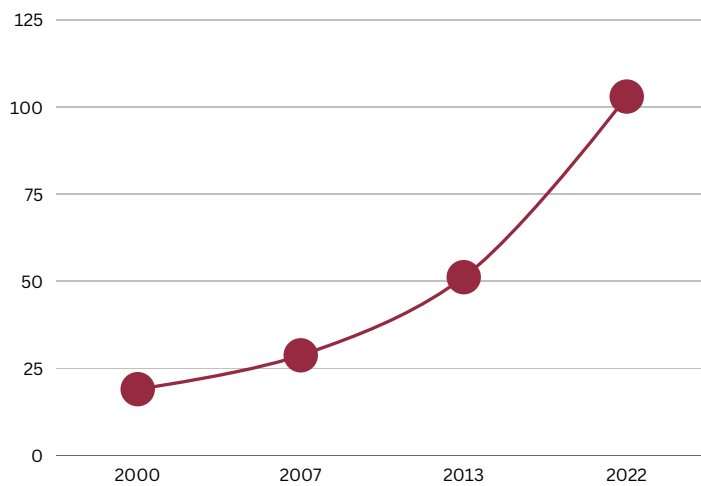
EVERY CAMPUS A REFUGE®

Mobilizing colleges and universities to host refugees on campus grounds and support them in their resettlement.

2022 In Review

103 MILLION

Forcibly displaced people worldwide



Note: 2022 figures are estimated using data available as of 9 June 2022
Source: [UNHCR Refugee Data Finder](#)

2022 saw yet another refugee emergency unfold with the breakout of the war in Ukraine. This reality is superimposed on a global refugee crisis that escalated in the last several years due to ongoing wars, economic collapse, climate and environmental disasters, famines, ethnic cleansing, and genocide.

In the United States, the refugee resettlement network continues to be in dire need of reform and resources after years of neglect and obstruction. Yet despite the challenges, leaders and innovators stepped up to address urgent needs in support of various immigration and resettlement efforts. And now, more than ever, leaders are reaching across disciplines and professional silos, forging multilayered and community-based approaches that take ideas into actions in service to refugees. This is where ECAR shined in 2022, playing a leading role in centering higher education as a key partner in reimagining how campuses can, and should, react to crises.

Additionally, 2022 proved to be an important juncture in the history of immigration and refugee resettlement in the United States. New and community-based efforts to resettle nearly 80,000 Afghans since the U.S. withdrawal from Afghanistan proved to be enormously popular through Operation Allies Welcome. This allowed for the launch of more sponsor circle programs in 2022 such as Uniting for Ukraine which will provide refuge for 90,000 Ukrainians fleeing war and a private sponsorship program for 24,000 Venezuelans.

We also witnessed the historic announcement by the Biden administration in September of the launch of a private refugee sponsorship pilot program in 2023. This pilot program will resemble the efforts undertaken by numerous organizations and communities to support the resettlement of Afghans, Ukrainians, and Venezuelans this past year. A key feature of this pilot is that it will allow for colleges and universities to sponsor refugee students and scholars.

We look forward to our involvement, along with key stakeholders, in this new and important chapter that will further connect higher education, in action, with refugee issues and matters. Educational institutions have always been used as places of refuge and shelter during times of war, natural disasters, and as centers of neighborhoods and communities. In leveraging the sizable assets of schools, particularly school systems, we make waves of change in the refugee resettlement system, and reflect how local communities can respond to global crises.

From Sea to Shining Sea

The number of active ECAR chapters tripled in 2022- an increase in refugee admissions in addition to new private sponsorship initiatives like Operation Allies Welcome, Uniting for Ukraine, and the Venezuelan parole initiatives led to this surge of interest.

Guilford College 

Agnes Scott College

Purdue University Ft. Wayne

Lafayette College

Notre Dame De Namur University

University of Tulsa

Oklahoma State University

Old Dominion University

Russell Sage College

Siena College

Wake Forest University

Washington State University



12+ Chapters

In 9 different states
from coast to coast

350+ Refugees

hosted by ECAR Chapters +
Resettlement Campuses

Our Community

Notre Dame de Namur University in California has announced a new pilot ECAR chapter to provide housing to refugees on its Belmont campus. As the first West Coast university to offer such a program, refugees live on campus for up to 90 days and receive community support as they transition into permanent housing. NDNU has hosted 4 families so far and is planning to host another 4 families in the very near future. This program demonstrates NDNU's commitment to civic engagement and its mission and values. Read more [here](#).



Photo credit: Curtis Driscoll/Daily Journal

August 2022 press conference on the ECAR Chapter at NDNU

Siena College recently joined the ECAR network and welcomed a refugee family from Afghanistan. With the help of students, the family was able to find work and adjust to their new home on campus. The guests are now on the path to becoming permanent residents, thanks to Siena's commitment to standing "side by side with those in need of support and solidarity." The college's involvement in this program embodies the true spirit of Franciscan values and sets an inspiring example for the entire community. Read more [here](#).



Photo credit: David Etzler

Ramadan Iftar at Siena College

Hamilton College students visited the ECAR chapter at Guilford College for an alternative spring break service trip. The goal was to establish an exchange program, in which students from each campus visit the other campus' ECAR chapter every spring. This provides an opportunity for students to engage in service. The exchange program also fosters a sense of community and solidarity among the participating colleges. Read more [here](#).



Photo credit: Walid Mosarsaa

Hamilton College student on their alternative spring break trip at the steps of King Hall at Guilford College, ECAR's flagship campus.

Our Community

On March 4th, 2022, Diya led a U.S. Department of Education webinar on supporting Afghan newcomers and other refugee groups. Attendees learned about higher education partners extending their services and utilizing their resources to aid new arrivals' successful transition to the U.S. The webinar also covered ways in which institutions and systems are offering support and opportunities to Afghan evacuees and how the education system can help them pursue new skills and credentials.



Photo credit: Anthony Ruiz

Department of State webinar

Old Dominion University (ODU) in Virginia became the first university in the state to join the Every Campus A Refuge (ECAR) network in partnership with their local resettlement agency, Commonwealth Catholic Charities. ODU's first guest family, refugees from Syria, moved into an apartment on campus and have been residing there for eight months. ODU's ECAR chapter is able to provide the family with intensive English lessons and volunteers will help them apply for jobs and find housing off campus. Read more [here](#).



Photo credit: ecar.odu

Food donations compiled by ODU students in preparation to host a new family

Also this past year, an Afghan family arrived at Washington State University's (WSU) Pullman campus as part of the ECAR network. WSU's ECAR chapter, in partnership with IRC, supported the family's resettlement in Pullman. The chapter has received funding from RRI and ECAR to host another family arriving soon and to provide opportunities for WSU students to assist with the challenges faced by refugees. Read more [here](#).



Photo credit: WSU Insider

Members of the ECAR team at WSU Pullman

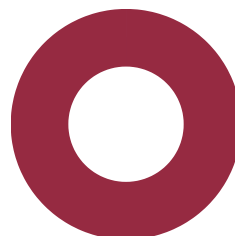
The ECAR Gathering



Photo credit: Autumn Holliefied

Guilford College, ECAR's flagship campus, hosted ECAR's first Gathering from September 22-24, 2022. The Gathering brought together more than 200 students, faculty, staff, refugees, resettlement professionals, funders, and other stakeholders. Together, we engaged in conversations that built community, mobilized colleges and universities to become Resettlement Campuses, and allowed us to reimagine the role of higher ed in refugee resettlement and support.

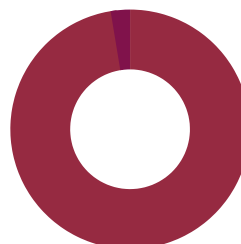
We engaged in Do-it-Together activities where we cooked and ate together; we did calligraphy; we walked the historic woods of Guilford College; and we did yoga! We also learned from academics, researchers, and experts working on myriad refugee-related issues. And we concluded it all with a festival that featured vendors from the refugee community, food trucks, lawn games, and a musical performance by former Guilford College ECAR guest, Blaise Pascal.



100% Gained and deepened awareness of higher ed initiatives supporting refugee resettlement.



100% Made new connections and deepened existing ones.

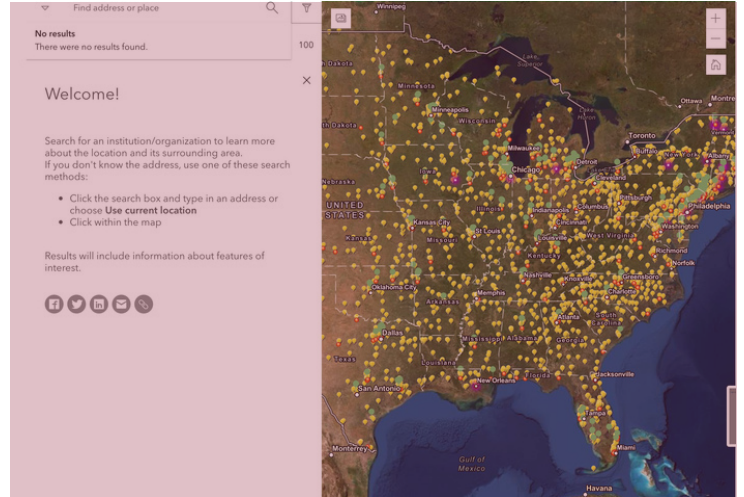


97% Felt a sense of belonging and inclusion at The Gathering.

Open Access Resources

The ECAR Map

The ECAR map tool is a geo-enabled map with layers that include refugee resettlement agencies; refugee and immigrant advocacy, service, and support groups; US colleges and universities; state refugee coordinator offices; and the headquarters of the 9 volunteer agencies "VOLAGs." The layers provide pertinent information such as contact information, websites, and addresses for institutions and organizations and allows users to easily visualize the refugee resettlement ecosystem as well as the resources and support in their area. The tool can be used to facilitate research, connect with potential partners, and analyze a given community's support infrastructure for new arrivals.



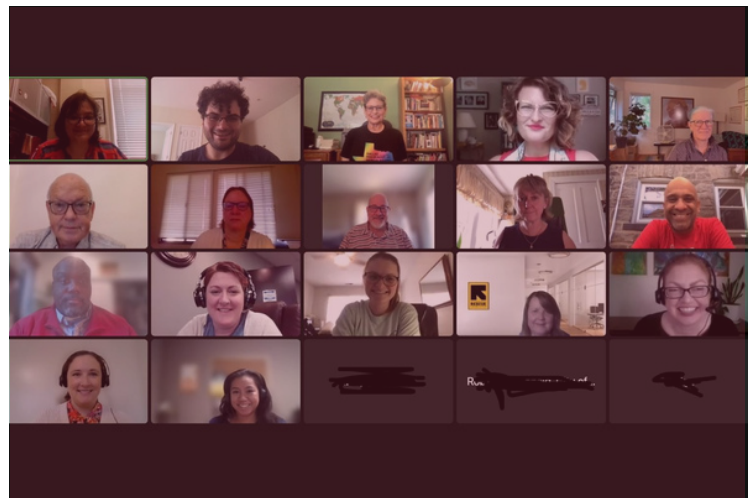
Visit our map [here](#).

3.5K Views in 2022

Monthly Virtual Trainings

Since May 2022, ECAR has been offering monthly trainings via Zoom in partnership with Refugee Welcome Collective (RWC). The trainings aim for participants to gain new understandings about refugee resettlement and ECAR, why college and university campuses are uniquely positioned to support refugee integration, and how to effectively mobilize resources to do so. The goal is to equip participants to leverage their campus and community resources to provide culturally responsive integration support while prioritizing the agency and dignity of refugees.

Photo credit: Walid Mosarsaa



Register for the next training [here](#).

104 Trainees in 2022

Open Access Resources

Bi-monthly Chapter Sessions

ECAR launched virtual meet-ups twice a month for coffee hours and trainings for ECAR Chapters including their faculty, staff, students, and wider community members. Topics included a mental health series on various vulnerable refugee demographics, workforce integration, cultural humility, and other important subjects.

Photo credit: Autumn Holliefied



Dr. Suzy Ismail giving a talk on 'Refugee Mental Health' during The ECAR Gathering

AHLAN Manual

The ECAR Gathering collected data to create the AHLAN Manual, an open-access guide for higher education institutions to establish "Do-It-Together" Resettlement Campuses. This data-driven, crowd-sourced document helps leaders use best practices and adapt them to their local context, focusing on long-term change and support for refugees. "Ahlan," meaning "welcome" in Arabic and "kin" in its literal sense, signifies the welcoming of refugees as family through Resettlement Campuses.

Photo credit: Autumn Holliefied



ECAR Gathering Participants

ECAR Implementation Support

ECAR Chapters enjoy numerous benefits while implementing ECAR's goals and best practices. The Implementation Checklist is intended to give a sense of how a Chapter might carry out programming at key stages of a typical ECAR life cycle: the foundational stage; the pre/initial hosting stage; the reception stage; the transitional stage; and the post-hosting stage. To see the Checklist, visit this [link](#).

ECAR
EVERY CAMPUS A REFUGEE®

ECAR Implementation Checklist At-A-Glance
(©2022 Every Campus A Refuge)

ECAR Chapters enjoy numerous [benefits](#) while implementing ECAR's goals and [best practices](#). The following checklist should give you a sense of how your Chapter might carry out programming at key stages of a typical ECAR life cycle: the foundational stage; the pre/initial hosting stage; the reception stage; the transitional stage; and the post-hosting stage.

Please note that not all milestones will apply to your Chapter depending on your resources and/or agreement with your resettlement agency partner. You are welcome to use hyperlinked forms as templates, but these should be adjusted depending on the specific terms of your agreement with the resettlement agency.

1) Laying the Foundation. The following example recommendations should be considered as soon as you sign your Licensing Agreement with ECAR; the Agreement allows your college to use the name "Every Campus A Refuge" and receive member benefits. See also tips on [how to get started](#).

Key Milestones	Example Recommendations
Partners with and supports local resettlement agency.	<input type="checkbox"/> Signs MOU ; vets and trains volunteers; ensures confidentiality and privacy.
Builds a robust network of supporters.	<input type="checkbox"/> Holds events to raise awareness; partners with campus and community groups; designates central point person.

THIS YEAR ECAR WAS
ABLE TO PROVIDE

\$60,000

TO

7

ECAR CHAPTERS &
RESETTLEMENT
CAMPUSES

Funding of up to \$10,000 was provided to colleges and universities seeking to support the resettlement and integration of refugees in alignment with ECAR's mission and best practices.

To apply for this opportunity, click [here](#).

Thanks to support from
The Shapiro Foundation
and Welcome.US

The Shapiro
Foundation



Welcome.US

[Resettlement Campuses are the Future of Higher Education](#)

The Academic Minute

[ECDC Partners with World Learning to Serve Refugees in Southern Vermont](#)

World Learning/SIT

[Resettlement Campuses Are the Future of Higher Education: How Colleges and Universities Can Help Rebuild America's Refugee Resettlement Capacity](#)

AAC&U

[ODU to Host Family from Syria as Part of 'Every Campus a Refuge' Initiative](#)

13NewsNow

[Changing the World and Your Campus One Refugee at a Time](#)

IngenioUS Podcast

[WFU student and faculty-led groups help support local refugees](#)

Wake Forest News

[Afghan Refugees, After Fleeing Brutal Conditions, Struggle with Bay Area Housing](#)

San Francisco Chronicle

[Refugee Awareness Week at Russell Sage College](#)

The Sanctuary for Independent Media

[Our Home is Your Home: Why colleges and universities can no longer ignore their responsibility to refugees](#)

AAC&U

CLICK THE HYPERLINKS TO
READ THE ARTICLES 

32+

Press
Features

READ MORE:

everycampusarefuge.net/in-the-press

Certificates Launching in 2023

Certificate in Advancing the Role of Community Stakeholders in Refugee Integration

In 2023, we will launch a new certificate in partnership with Guilford College and OUR. This program is designed to help individuals and organizations better understand global forced migration, refugee integration in the U.S., and engage in refugee-centered practices and community engagement. The 15-hour program can be taken online or in person and is open to students, educators, community members, and employees across sectors, as well as businesses, faith-based organizations, non-profits, and non-governmental organizations. The training can also be customized to fit the specific needs of an organization. To learn more, email us at everycampusarefuge@gmail.com

GUILFORD
COLLEGE

CENTER for PRINCIPLED
PROBLEM SOLVING and
EXCELLENCE in TEACHING



OPENING
UNIVERSITIES
for REFUGEES

Every Campus A Refuge (ECAR) "Train the Trainers" Program with NASH

In partnership with NASH's RRI, ECAR will launch a complimentary training to NASH members on how to effectively support the integration of refugees into their community. University faculty and staff will be trained on how to establish an ECAR chapter on their campus and advocate for the successful integration and inclusion of refugee students and families. The program also works to raise awareness about the valuable role universities can play as co-sponsors and sponsors of refugees and provides technical and coordination support. To sign up, register [here](#).



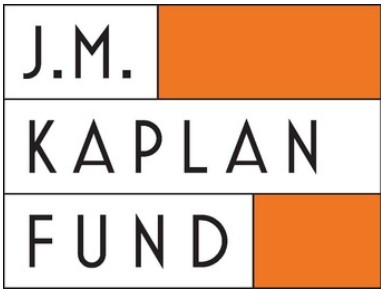
Refugee
RESETTLEMENT
INITIATIVE

NASH
NATIONAL ASSOCIATION
OF SYSTEM HEADS



Support from Foundations and Organizations

We are grateful for the foundations and organizations that support our mission.



Welcome.US



**WEAVER
FOUNDATION**

Thank You

We acknowledge and thank the generous assistance our chapters have received directly by volunteers and community members across the country through monetary and/or in-kind donations.

We are also deeply grateful to the following donors who made heartfelt contributions to ECAR this year. Their generosity and commitment to our work inspire us to keep pushing forward and making a positive impact. Thank you for your unwavering support.

Barbara Wiley

Beate Winterstein

Bernhard Streitwieser

Bobby Vaughn

Cathryn Bennett

Edward Shapiro

Emilia Phillips

George Peterson

Hali Rose Kohls

Heather Adams

Hourie Tafech

Jennifer Feather

Jennifer Olmsted

Julia Haverstock

Katherine Wiley

Lauren Bowers

Mathew Armstrong

Nancy Zimpher

Rebecca Karoff

Robert Koulish

Sufean Rose

Terri Schroth

The Nolen Family

Students preparing to host a refugee family at Old Dominion University

Photo credit: Jennifer Fish



About ECAR

Photo credit: The Vatican



Kathleen Herbst, Guilford College Program Coordinator & Outreach Specialist, was able to gift Pope Francis a plate designed by former Guilford College ECAR guest, Ali Al-Khasrachi, while attending a conference in Rome.

In response to Pope Francis' call on every European parish to host one refugee family, ECAR was founded at Guilford College by Dr. Diya Abdo in September of 2015 to call on every college and university in the world to partner with their local refugee resettlement agencies to host refugees on campus grounds and assist them in resettlement. The idea is that university and college campuses have everything necessary - housing, food, care, skills - to take in refugees and support them as they begin their lives in their new homes.

Since January of 2016, Guilford College partnered with Church World Service-Greensboro to host over 90 refugees. ECAR is now spreading, with campuses large and small heeding the call and actively hosting refugees (including Lafayette College, Wake Forest University, Old Dominion University, Russell Sage College, Siena College, Purdue Ft. Wayne, Washington State University, Oklahoma State University, among others) and more are mobilizing to do so.

BOARD

Diya Abdo, Ph.D. (she/her)
President

Jonathan Maj (he/him)
Vice President & Treasurer

Walid Mosarsaa (he/him)
Secretary

Hali Rose Kohls (she/her)
Assistant Secretary

Nour Salhoub (she/her)
At-Large Member

STAFF

Diya Abdo, Ph.D. (she/her)
Executive Director

Walid Mosarsaa (he/him)
Senior Program Coordinator

Kathleen Herbst (she/they)
Program Coordinator & Outreach
Specialist

PROGRAM CONSULTANTS

Jane Roche (she/her)

Christian Matheis, Ph.D. (he/they)

Sonalini Sapra, Ph.D. (she/her)

Cathryn Bennett, Ph.D. (she/her)

Gül İnanç, Ph.D. (she/her)

Naglaa Rashwan (she/her)

Ashley Loper-Nowak (she/her)

Help us Transform the Refugee Resettlement Landscape **Through Partnerships with Higher Education**

everycampusarefuge.net/basic-home/donate/

Become a monthly donor
by visiting us online.

Honor Someone
with a gift for a celebration or commemoration.

MAIL

Your contribution to:

Every Campus A Refuge
4301 United St.
Greensboro, NC 27403

EMAIL

everycampusarefuge@gmail.com

Please make checks payable to "Every Campus A Refuge".

"A moving and timely book that strips away misleading politics to reveal the complexities of real human lives"

— *Kirkus Reviews* (starred review)

Scan QR to
Purchase



AMERICAN REFUGEE

True Stories of the Refugee Experience

DIYA ABDO

**EVERY
CAMPUS
A REFUGE**

2022

ECAR

EVERY CAMPUS A REFUGE®

www.everycampusarefuge.net



Every Campus A Refuge



@EvCampusARefuge



@everycampusarefuge



Every Campus A Refuge