



ANONYMOUS

“ My campus group was supportive and inclusive, helping me navigate the new environment and build a sense of community.

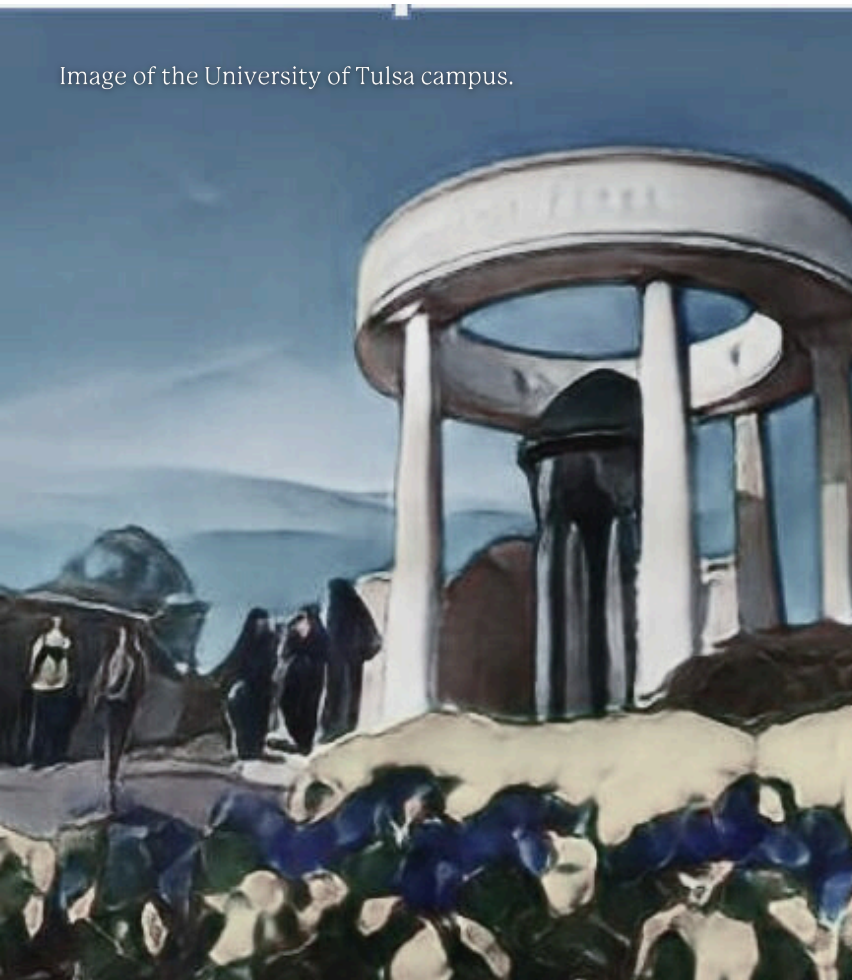
Sawt: An Oral History of Resettlement Campuses was funded by an Emerson Collective Fellowship.



ARRIVAL

On my first day on campus I focused on orientation, meeting people, and learning to navigate the new environment. It was challenging but marked the beginning of building a new community and support system.

Image of the University of Tulsa campus.



Hosted by:

THE UNIVERSITY OF TULSA



Self-interview in English

With the informed consent of participants, interview transcripts have been adapted here in narrative form for clarity and efficiency with a commitment to retaining the intended meaning.

everycampusarefuge.org

SUPPORT ON CAMPUS

The physical space on campus was initially overwhelming but gradually became familiar and welcoming. *My campus group was supportive and inclusive, helping me navigate the new environment and build a sense of community.*

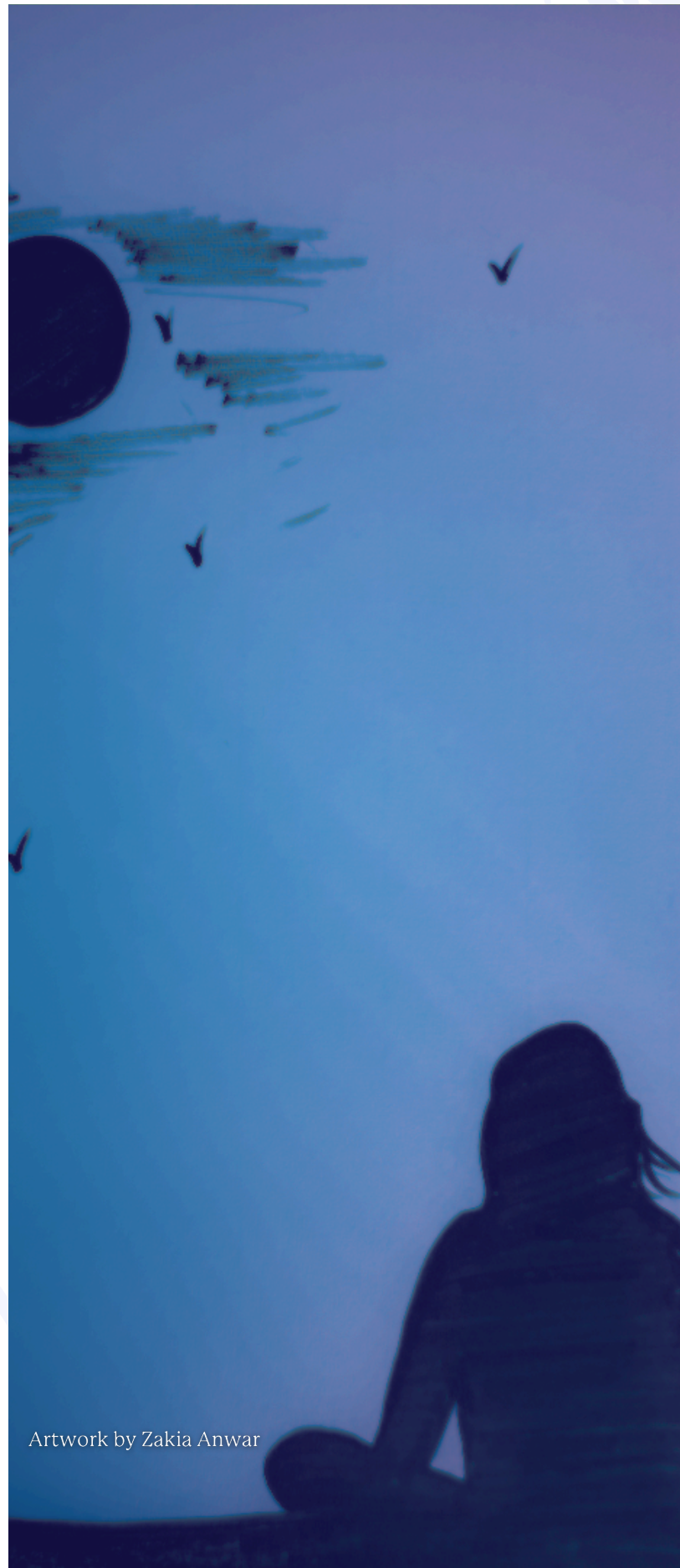
The best experience I have on campus was likely when I participated in a cultural exchange event. It was an opportunity to share my own culture with others while learning about theirs. The atmosphere was vibrant, and I made meaningful connections with people from diverse backgrounds [;] it was a reminder of the richness of diversity and the power of community in fostering understanding and mutual respect.

I appreciated the support and resources provided the most, including the legal support from TU legal Clinic, culture exchange classes and a welcoming community.

CREATING A LASTING COMMUNITY

I formed meaningful relationships with other refugees and students, providing crucial support and a sense of community.

Culture exchange class at TU helped me to find my community and build my relationship with people.



Artwork by Zakia Anwar